



Bulldog® 25-5-20 Bermudagrass Plus

Related Crops

This formulation is produced specially for the nutritional needs of bermudagrass. A superb fertilizer for greens, tees, and fairways. The nutrition package in this formula helps bermudagrass tolerate heavy traffic, frequent mowing, and rapid decomposition of thatch.

DERIVED FROM:

Potassium Nitrate, Urea, Ammonium Phosphate, Iron EDDHA, Iron EDTA, Manganese EDTA, Copper EDTA, Zinc EDTA, Boric Acid, Sodium Molybdate. F1367.

POTENTIAL ACIDITY:

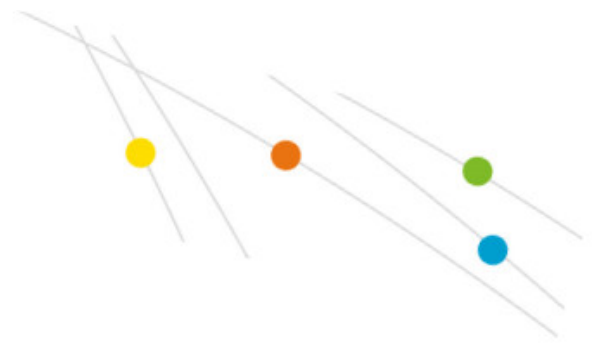
675 lbs calcium carbonate equivalent per ton.

SOLUBILITY (max.):

2 lbs per gallon in cold water. Hot water and agitation improve solubility.

Technical information

Total Nitrogen (N):	25%
Ammoniacal Nitrogen:	2.5%
Nitrate Nitrogen:	6.0%
Urea Nitrogen:	16.5%
Available Phosphate (P2O5):	5%
Soluble Potash (K2O):	20%
Sulphur (S):	1.7%
Boron (B):	0.01%



Technical information

Copper (Cu):	0.01%
Chelated Copper (Cu):	0.01%
Iron (Fe):	0.20%
Chelated Iron (Fe):	0.20%
Manganese (Mn):	0.06%
Chelated Manganese:	0.06%
Molybdenum (Mo):	0.01%
Zinc (Zn):	0.02%
Chelated Zinc:	0.02%