



## Bulldog® StableN 25-0-25 No Phosphate

### Related Crops

High analysis water soluble formula produced especially for the areas where phosphorus is not required. Superb fertilizer for greens, tees, fairways, roughs and common areas. It contains a 1:1 N:K ratio including stabilized nitrogen. Stabilized nitrogen controls nitrogen loss due to volatility, denitrification and leaching, ensuring highly efficient performance for maximum returns. Ideal for areas needing long-lasting and consistent green color without the threat of potential phosphate leaching.

### Benefits of Bulldog® StableN No Phosphate

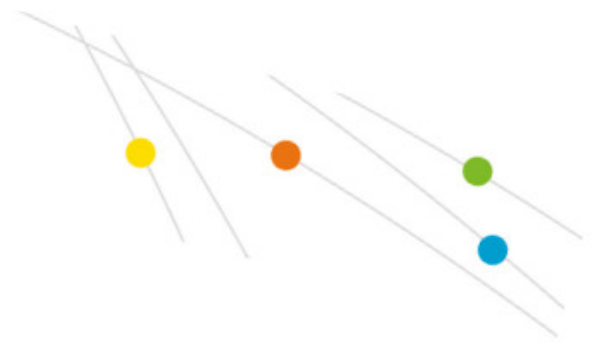
- Quick green-up
- Puts you in control of your fertility program
- Exceptional turf color and quality that stands up to stress
- Improves nitrogen efficiency by controlling loss to volatilization, denitrification and leaching
- Environmentally responsible
- Tank-mix compatible

### DERIVED FROM:

Urea, Potassium Nitrate, Magnesium Sulfate, Potassium Sulfate, Iron EDDHA, Iron EDTA, Manganese EDTA, Copper EDTA, Zinc EDTA, Boric Acid, Sodium Molybdate. F1367.

## Technical information

|                            |       |
|----------------------------|-------|
| <b>Total Nitrogen (N):</b> | 25%   |
| <b>Nitrate Nitrogen:</b>   | 5.5%  |
| <b>Urea Nitrogen88:</b>    | 19.5% |



## Technical information

|   |       |
|---|-------|
| <b>Soluble Potash (K<sub>2</sub>O):</b>   | 25%   |
| <b>Magnesium (Mg):</b>  | 0.3%  |
| <b>Water Soluble Magnesium (Mg):</b>  | 0.3%  |
| <b>Sulfur (S):</b>  | 2.6%  |
| <b>Combined Sulfur (S):</b>   | 2.6%  |
| <b>Boron (B):</b>   | 0.01% |
| <b>Copper (Cu):</b>   | 0.01% |
| <b>Chelated Copper (Cu):</b>  | 0.01% |
| <b>Iron (Fe):</b>   | 0.20% |
| <b>Chelated Iron (Fe):</b>  | 0.20% |
| <b>Manganese (Mn):</b>  | 0.06% |
| <b>Chelated Manganese:</b>  | 0.06% |
| <b>Molybdenum (Mo):</b>   | 0.01% |
| <b>Zinc (Zn):</b>   | 0.02% |
| <b>Chelated Zinc:</b>   | 0.02% |
| <b>Nitrogen stabilized with N-(n-butyl) thiophosphoric triamide and dicyandiamide<sup>88</sup>:</b> | 19.5% |