

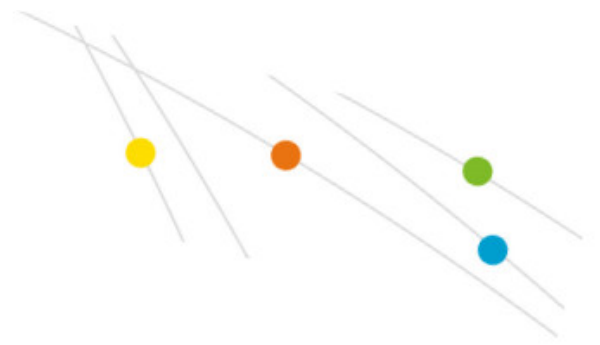
Ultrasol® Initial 15-40-13+TE – Australia

Related Crops

- Ultrasol® Initial is a formula which has been developed to stimulate growth and early development of roots, stems and leaves thanks to its well-balanced nutrient composition and high content of phosphate.
- Ultrasol® Initial is to be applied especially during the first weeks of the vegetative cycle.

Technical information

Total nitrogen (N):	13%
Nitric nitrogen (N-NO₃):	0.8%
Ammonium nitrogen (N-NH₄⁺):	7.1%
Ureic nitrogen (N-NH₂):	5.1
Phosphorus (P):	17%
Potassium (K):	10%
Sulphur (S):	2%
Boron (B):	0.02%
Copper (Cu):	0.004%
Iron (Fe) 35% EDDHA – 65% EDTA:	0.04%
Manganese (Mn) EDTA:	0.025%
Molybdenum (Mo):	0.002%



Technical information

Zinc (Zn) EDTA:

0.015%