



Ultrasol® ProP® 20-10-20 Greenhouse Plus

Related Crops

Popular general purpose formula for a variety of crops and growing conditions. Urea-free, with a high ratio of nitrate to ammonium nitrogen makes this formula well suited for plant bed and soil-less media. Excellent formula for growing plugs, transplants and bedding plants, and tobacco floatbeds.

DERIVED FROM:

Ammonium Phosphate, Potassium Nitrate, Ammonium Nitrate, Magnesium Sulfate, Iron EDDHA, Iron EDTA, Manganese EDTA, Copper EDTA, Zinc EDTA, Boric Acid, Sodium Molybdate. F1367

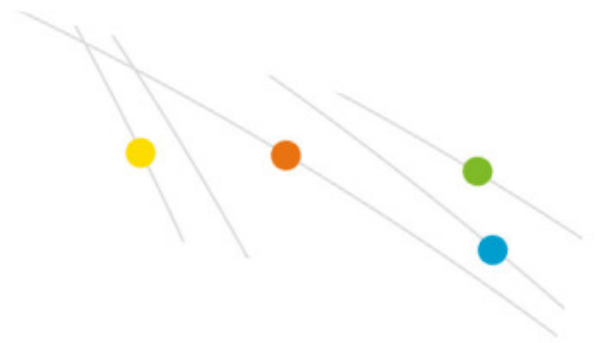
Chlorine (Cl), Maximum0.50%

POTENTIAL BASICITY:

400 lbs calcium carbonate equivalent per ton.

Technical information

Total Nitrogen (N):	20%
Ammoniacal Nitrogen:	8.0%
Nitrate Nitrogen:	12.0%
Available Phosphate (P2O5):	10%
Soluble Potash (K2O):	20%
Magnesium (Mg):	0.50%
Water Soluble Magnesium (Mg):	0.50%
Sulfur (S) Combined:	1.00%



Technical information

Boron (B):	0.017%
Copper (Cu):	0.01%
Chelated Copper (Cu):	0.01%
Iron (Fe):	0.10%
Chelated Iron (Fe):	0.10%
Manganese (Mn):	0.05%
Chelated Manganese (Mn):	0.05%
Molybdenum (Mo):	0.001%
Zinc (Zn):	0.015%
Chelated Zinc (Zn):	0.015%